

Children & Young Peoples Social Care and Services Scrutiny Panel

Locality Working

17th January 2022

Lyndsey Coe
Neighbourhood Development Manager
lyndsey.coe@thirteengroup.co.uk

Overview of Locality Working:

- 2 year pilot in Newport and North Ormesby Wards.
- Co-location of staff from across different organisations.
- Involves a system change to the current operational delivery model across services.
- Reconfigure relationships between statutory organisations and the community.
- Collaborative approaches to address the underlying causes of community problems and build capacity within the community.

Outcomes and benefits (what we will measure)

- Perceptions of crime/ASB
- Perception of being able to influence decision making
- Perceptions relating to community cohesion
- Improved community confidence in LA and partners to tackle local issues
- Increase in owner occupiers
- Reduction in the number of empty homes

Locality Working



- Less children being subject to child sexual and criminal exploitation
- Better outcomes for children / Reduction in LAC
- Better Environment, healthier population, increased education results, happier community
- Reduction in people raising that issues have been reported but not dealt with
- Improvement on IMD position = Long term

Why North Ormesby

- Highest level of antisocial behaviour
- Highest rate of female victims of violent crime
- Highest rate of male victims of violent crime. Even higher than the Central Ward which has the 'Town Centre'.
- Highest number of lost children reported to LA Street Wardens
- Highest number of hospital admissions overall
- Highest number of hospital admissions for self harm
- Highest number of hospital admissions for COPD
- 2nd highest level of racially motivated crime
- 2nd highest number of ambulance pick-ups for alcohol & drugs
- 4th highest level of alcohol & drug related hospital admissions to JCUH

Why North Ormesby



- Highest proportion of children in looked after care
- Highest proportion of children receiving early help
- Highest proportion of children classed as CiN

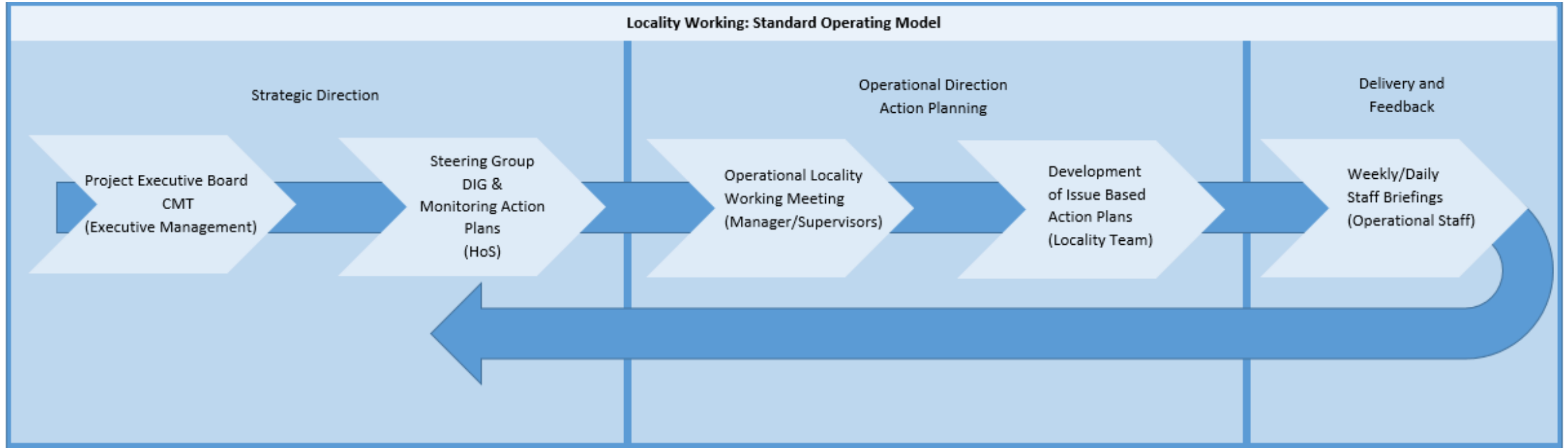
- Children Social Care (CSC) data shows North Ormesby has
 - 7.54% of people young people receiving early help
 - 3.83% are CiN
 - 1.69% are on Child Protection plans (2nd highest in Middlesbrough) and
 - 6.62% are in looked after care

Why North Ormesby



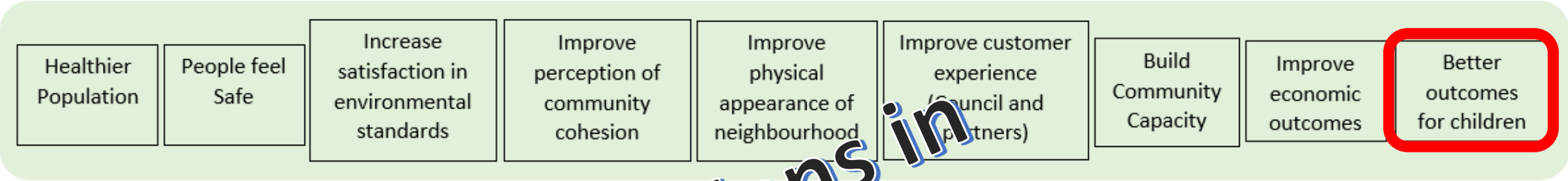
- Adult Social Care (ASC) need is more mental health related in the North Ormesby ward
- North Ormesby ward is the most deprived ward in Middlesbrough and the 2nd most deprived ward in England.
- Life expectancy is 13.3 years lower for men and 11.2 years lower for women in the most deprived areas of Middlesbrough than in the least deprived areas.
- Public Health profiles show that Middlesbrough has high levels of Suicide a significant cause of death in young adults. It is also seen as an indicator of underlying rates of mental ill-health.
- Across Middlesbrough in Year 6, 23% of children are classified as obese. Levels of teenage pregnancy, GCSE attainment, breastfeeding and smoking in pregnancy are also worse than the England average.
- Across Middlesbrough the rate for self-harm hospital admissions is worse than the average for England. This represents 486 admissions per year in Middlesbrough. **North Ormesby has the highest rate**

Locality Working Governance Structure

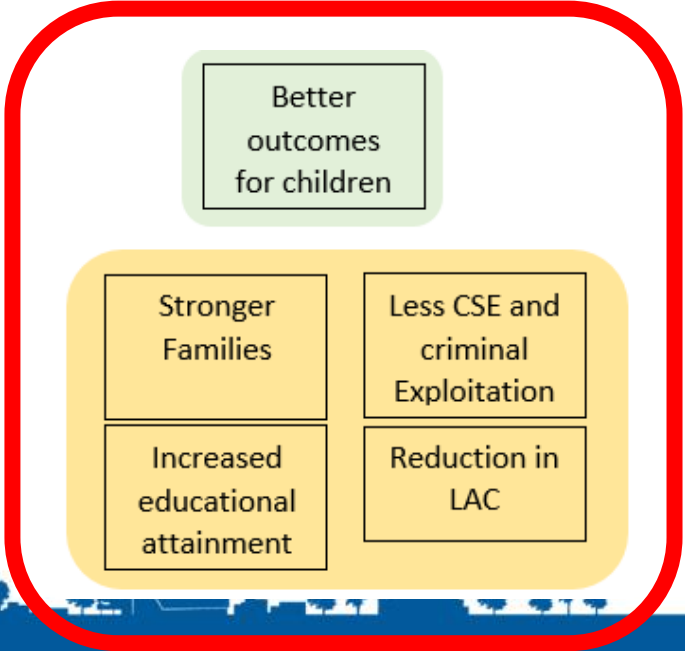


Outcome
Improved life chances and life experience

Objectives/Action Plans



9 Action Plans in each Locality



Locality Working



- Locality Action plans all have 'smart' targets and actions are being linked to PMF indicators.
- The Thirteen Group model of percentage completion has been applied to track progress.
- PMF indicators are also used to monitor impact and movement.
- Action plans are in place for each of the 2 localities and they have allocated leads i.e. Children's Services plan is lead by Senior Social Worker (Review Team) These are reviewed monthly, indicators that change negatively or project pressures are raised at DIG for further discussion and assistance. Regular progress/highlight/update reports are produced for Assurance and Exec.

Partners Involved- North Ormesby



- Environment/Area Care
- Community Safety Wardens
- Selective Landlord Licensing
- Education EMAT team
- Adult Social Care incl. Housing solutions, Substance Misuse and Welfare Advice
- Cleveland Police
- Public Protection
- Revenue and Benefits
- Early Help team
- Public Health team
- Thirteen Housing
- Children Social Care Social Workers
- DWP and Routes to Work
- Cohesion and Migration team
- Big Local
- Children's Centre
- Mima (Borderland Project)
- You've Got This Team
- Youth Focus North East (Youth Outreach)
- Together Middlesbrough & Cleveland
- Middlesbrough Environment City

Locality Working



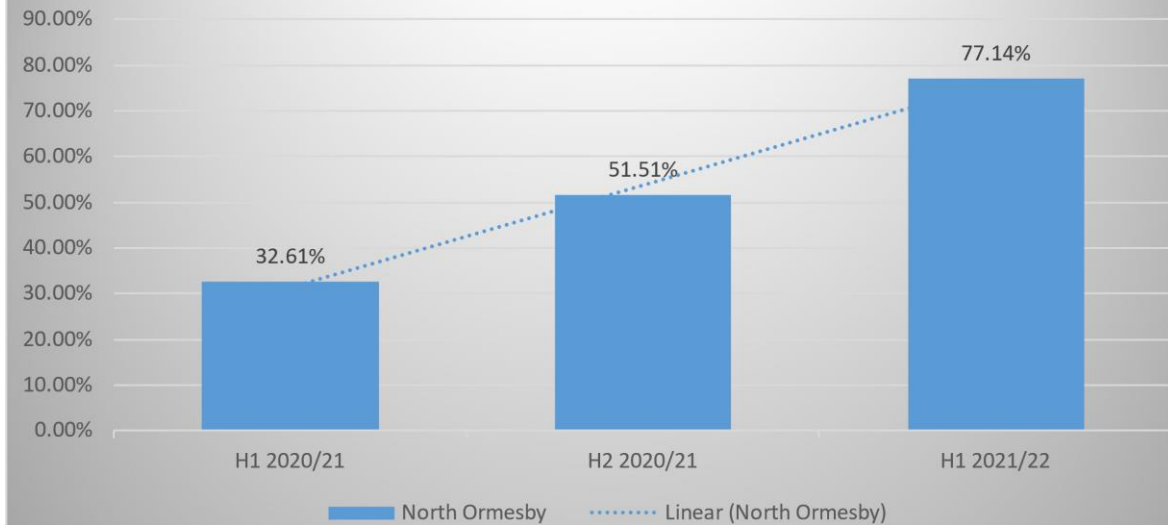
Demand modelling identified that Crime and ASB, the perception of safety and Environmental Standards are the three main issues within both localities

The introduction of the flying squad and named Police Officers have improved both efficiency and responses to the above issues. Community feedback also indicates an improvement in perception of safety and indicates residents intend to live within the ward for longer.

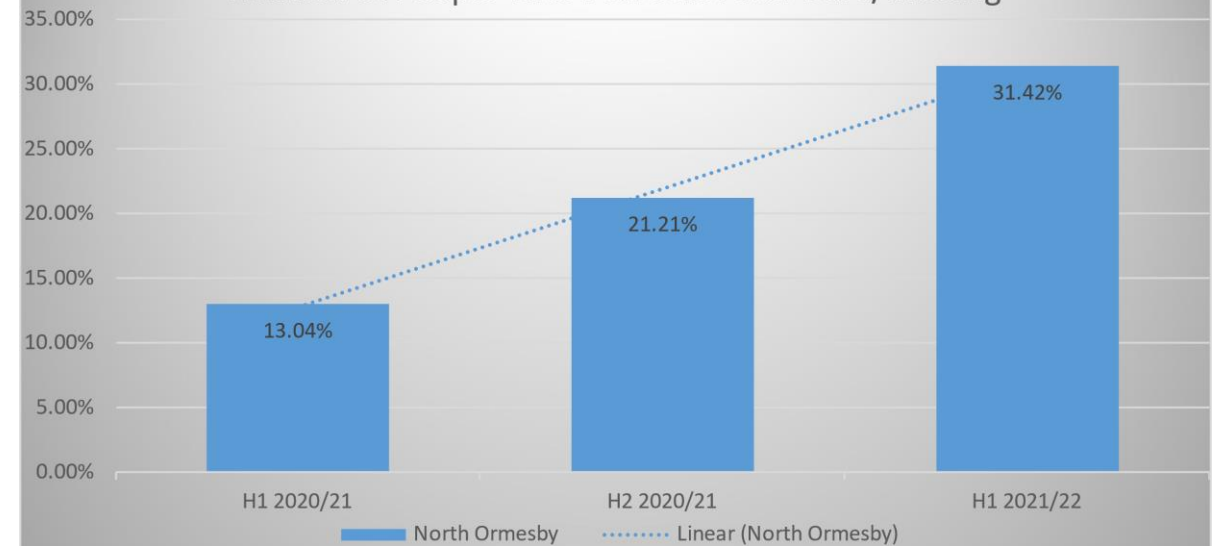
Locality Working Update on Progress

Improved public perception within North Ormesby

Number of People Who Feel Safe During the Day



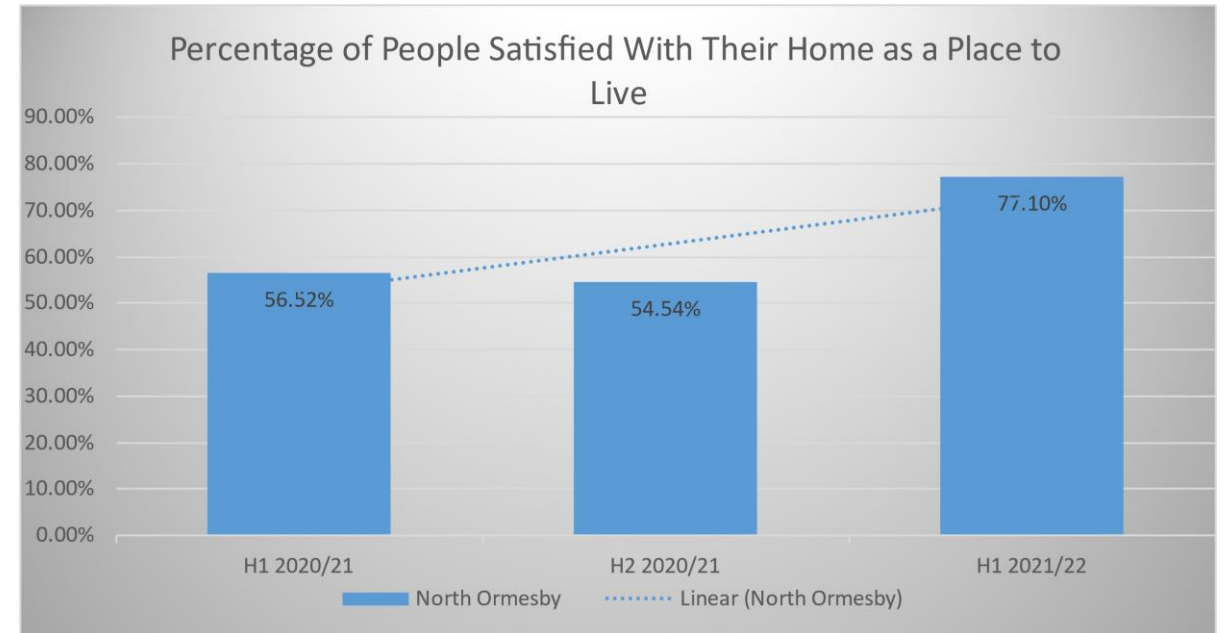
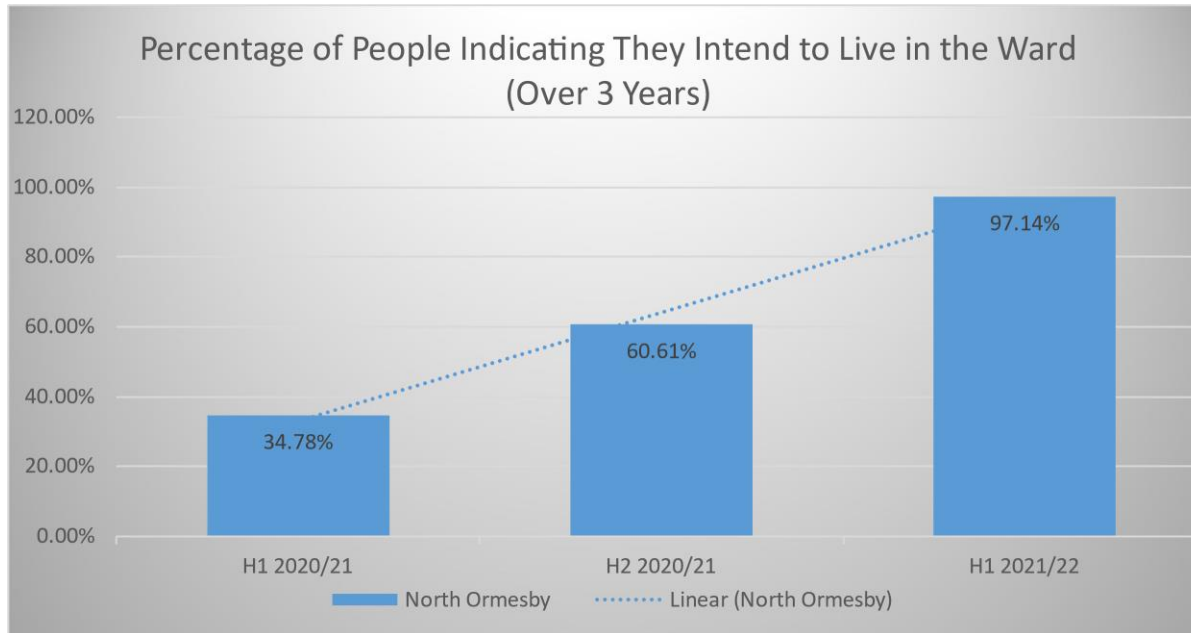
Number of People Who Feel Safe After Dark/Evening



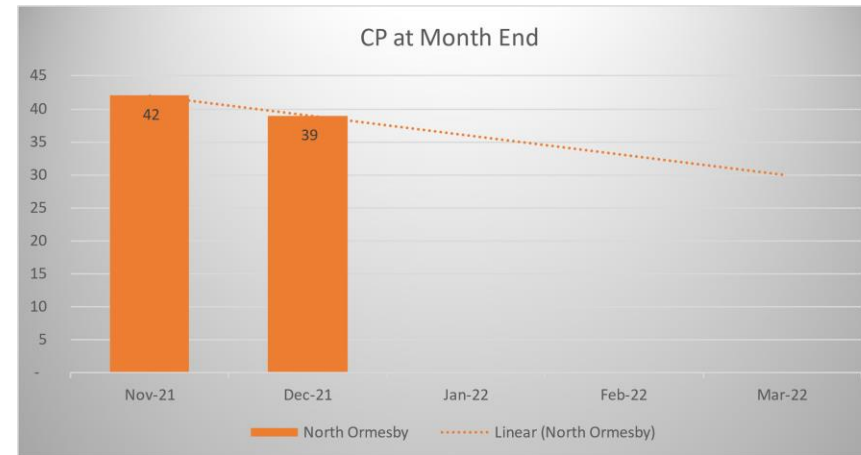
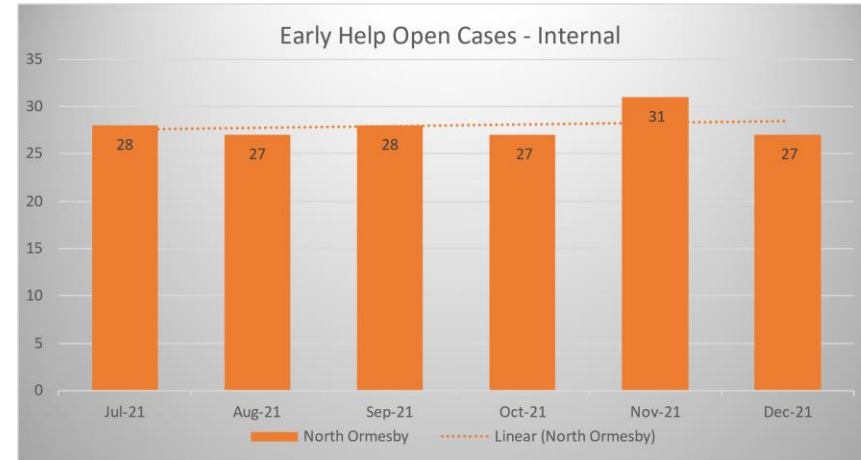
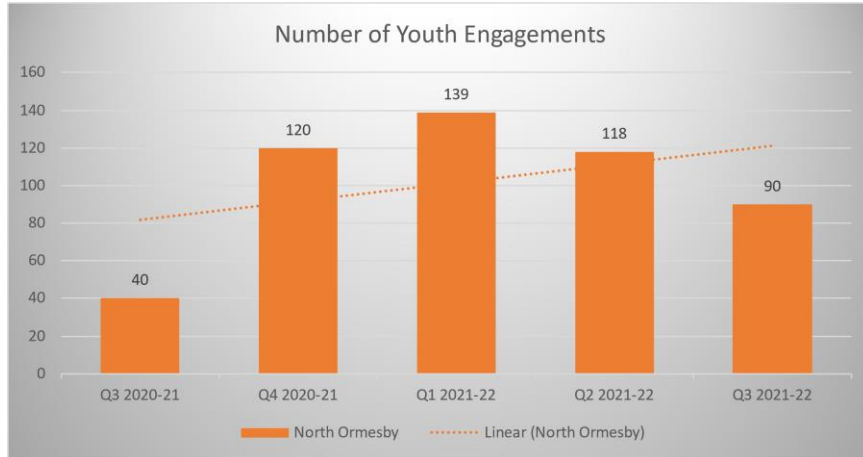
Locality Working Update on Progress



Improved public perception within North Ormesby



Better outcomes for children data



Environmental Improvements

A number of alley makeover projects have taken place within the area in partnership with residents and partners.

Residents have taken a lead on what they would like to see in their community spaces, assisting to do the work and learning new skills from the team offering a sustainable outcome.



Community taking a lead- Community Awards

Young people within the community designed and hosted with the support of partners a community awards event.

This was to recognise and celebrate how the community have supported each other through the pandemic

“It was such a lovely night. I do what I do in my business not for recognition, but because I’m passionate about my work. I’ve been in the beauty industry for over 21 years and have had Savvy Health Hair and Beauty Academy in North Ormesby for 10 years, and I’m very humbled and grateful to win this award.” Lisa Fallow, award winner



“We have had the pleasure of supporting young people to plan, design and deliver these two events for their local communities. It’s fantastic for young people to take ownership of this project make it their own and the response from the community to these young people was priceless.” Heather Insull, YFNE